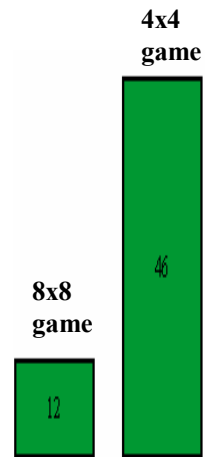
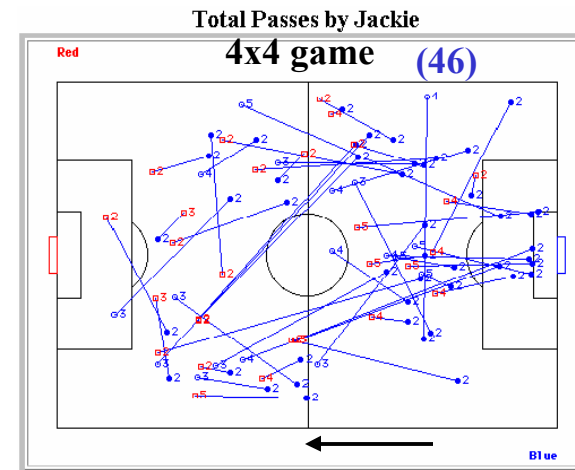
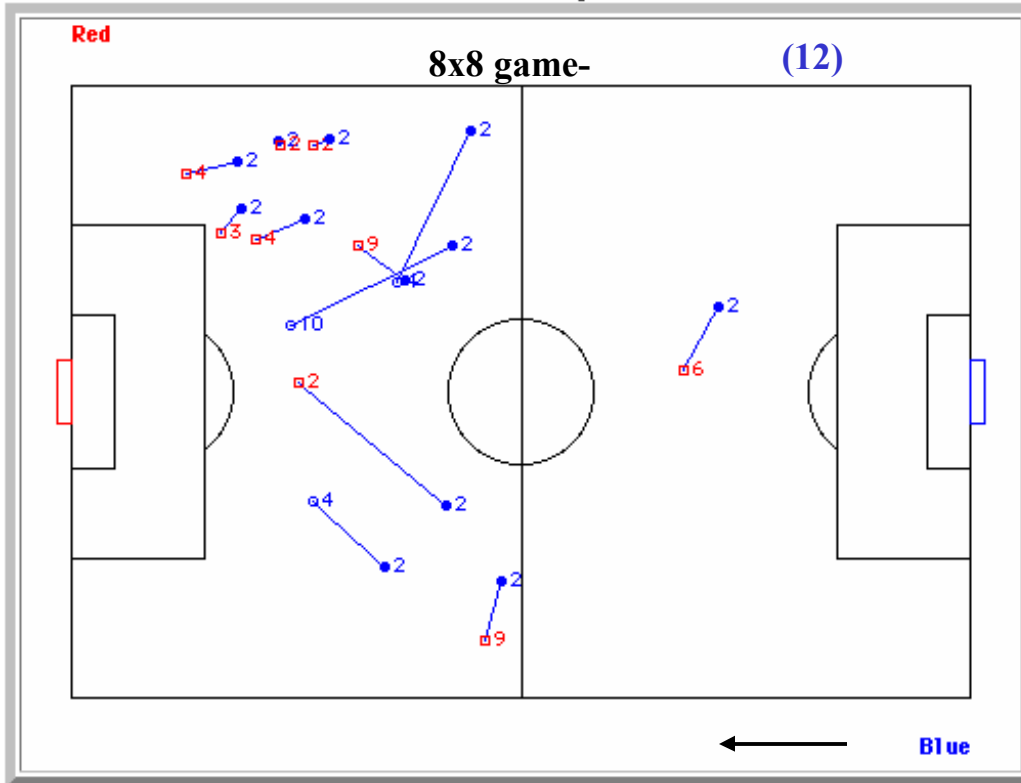




# Jackie- Player Performance-Total Passes

## Blue Team - No "2"

Total Passes by Jackie

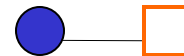


**Legend:**



She **initiated** the pass to her teammates

She **completed** the pass to her teammates



She **initiated** the pass to her teammates

She **lost** the pass to her opponent



# Jackie- Player Performance-Total Passes

## Blue Team - No "2"

### Head-to-Head Comparison

Game	GO	IG	SH	IS	CP	LP	TP	CR	IP	CK
4 v 4	1	0	1	0	18	28	46	39%	42	0
8 v 8	1	0	1	9	3	9	12	25%	9	0

GO: Goals (Number of goals during game)  
 IG: Impact Goals (Number of passes resulting in a goal)  
 SH: Shots on Goal (Number of shots on goal)  
 IS: Impact Shots (Number of passes resulting in a shot on goal)  
 CP: Completed Passes (Number of passes completed to team-mates)  
 LP: Lost Passes (Number a passes lost to opponent)  
 TP: Total Passes (Completed and lossed passes during game)  
 CR: Completion Ratio (Percent of total passes that were completed)  
 IP: Intercepted Passes (Number of passes that were intercepted from the opponents)  
 CK: Corner Kicks (Number of corner kicks)  
 TI: Time (Total number of minutes played in the game)

### Observations & Analysis

#### 8x8 game

- She was assigned to play as a attacking player (the data showed that she played mostly as a forward)
- She had 12 total passes
- She completed 3 passes. Her completion rate =25%
- She intercepted 9 passes
- Most of her passes were forward (none into the penalty area)

#### 4x4 game

- She played all positions (according to the data shown in the small field.
- She had 46 total passes (the highest in the game by both team players)
- No positions were assigned. (She moved on her own all over the field)
- She completed 18 passes with a completion rate of 39%
- She intercepted 42 passes.
- Most of her passes were forward but some were in the lateral direction.

### Comparison of Jackie's Performance

#### 8x8 Vs 4x4 game

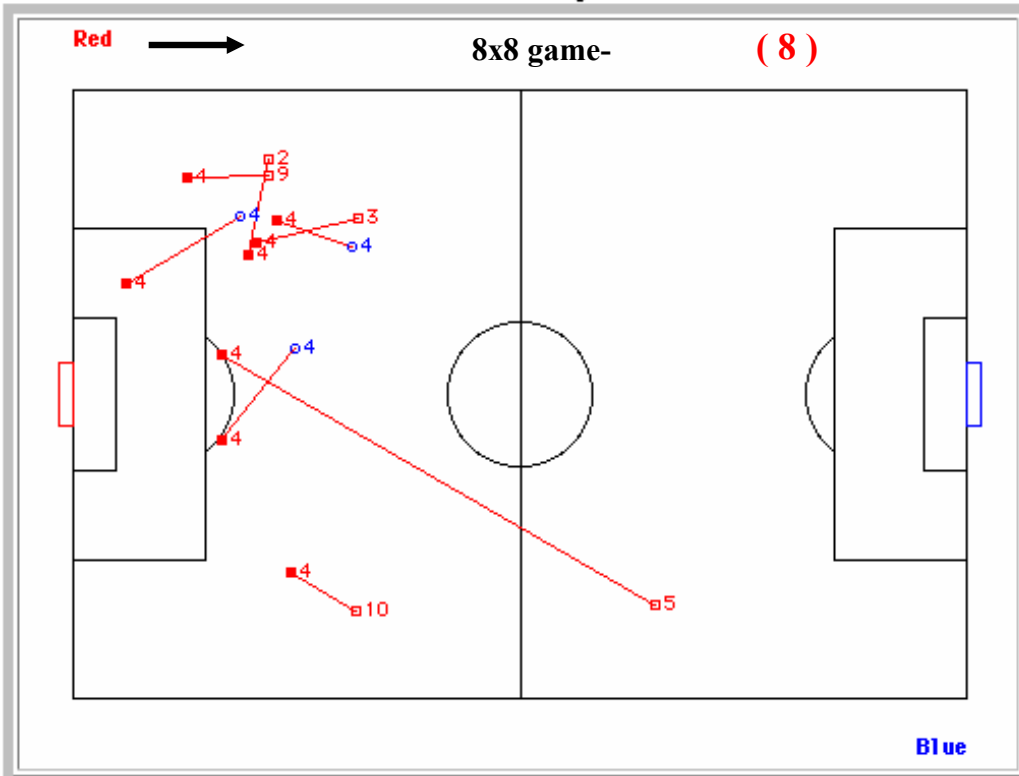
- She had almost 4 times more passes in the small game
- She scored 1 goal and had 1 shot on goal in both games
- Her completion rate was up( from 25% to 35% in the small game)
- She Intercepted almost 5 times more balls from the opponent in the small game
- She had 6 times more completed passes in the small game ( from 3 to 18 passes)

# Laura- Player Performance-Total Passes

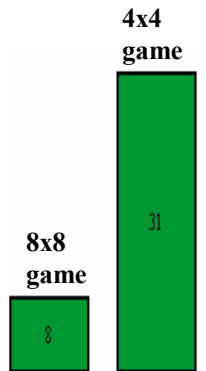
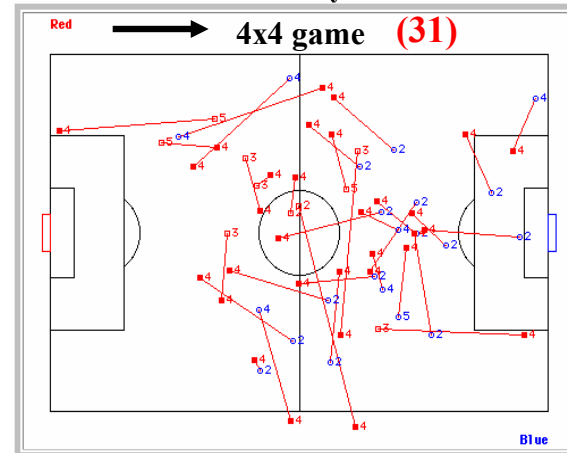
Red Team - No "4"



Total Passes by Laura



Total Passes by Laura



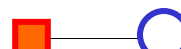
Total Passes Comparison

**Legend:**



She **initiated** the pass to her teammates

She **completed** the pass to her teammates

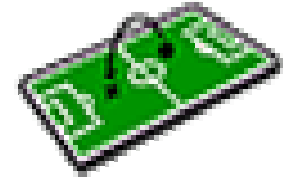


She **initiated** the pass to her teammates

She **lost** the pass to her opponent

# Laura- Player Performance-Total Passes

## Red Team - No “4”



### Head-to-Head Comparison

Game	GO	IG	SH	IS	CP	LP	TP	CR	IP	CK
4 v 4	2	0	3	0	10	21	31	32%	17	0
8 v 8	0	0	0	0	5	3	8	62%	5	0

GO: Goals (Number of goals during game)

IG: Impact Goals (Number of passes resulting in a goal)

SH: Shots on Goal (Number of shots on goal)

IS: Impact Shots (Number of passes resulting in a shot on goal)

CP: Completed Passes (Number of passes completed to team-mates)

LP: Lost Passes (Number a passes lost to opponent)

TP: Total Passes (Completed and lossed passes during game)

CR: Completion Ratio (Percent of total passes that were completed)

IP: Intercepted Passes (Number of passes that were intercepted from the opponents)

CK: Corner Kicks (Number of corner kicks)

TI: Time (Total number of minutes played in the game)

### Observations & Analysis

#### 8x8 game

- She was assigned to play as a defender (she did play mostly as a mid/left defender)
- She had 8 total passes
- She completed 5 passes. Her completion rate =62%
- Only one pass went into the attacking half
- She intercepted 5 passes
- Most of her passes were forward

#### 4x4 game

- No positions were assigned. (She moved on her own all over the field)
- She played mid-field/ fwd (according to the data shown in the small field.
- She had 31 total passes
- She completed 10 passes with a completion rate of 32%
- She intercepted 17 passes.
- Most of her passes were forward but some were in the lateral direction.

### Comparison of Laura’s Performance ( 8x8 Vs 4x4 game)

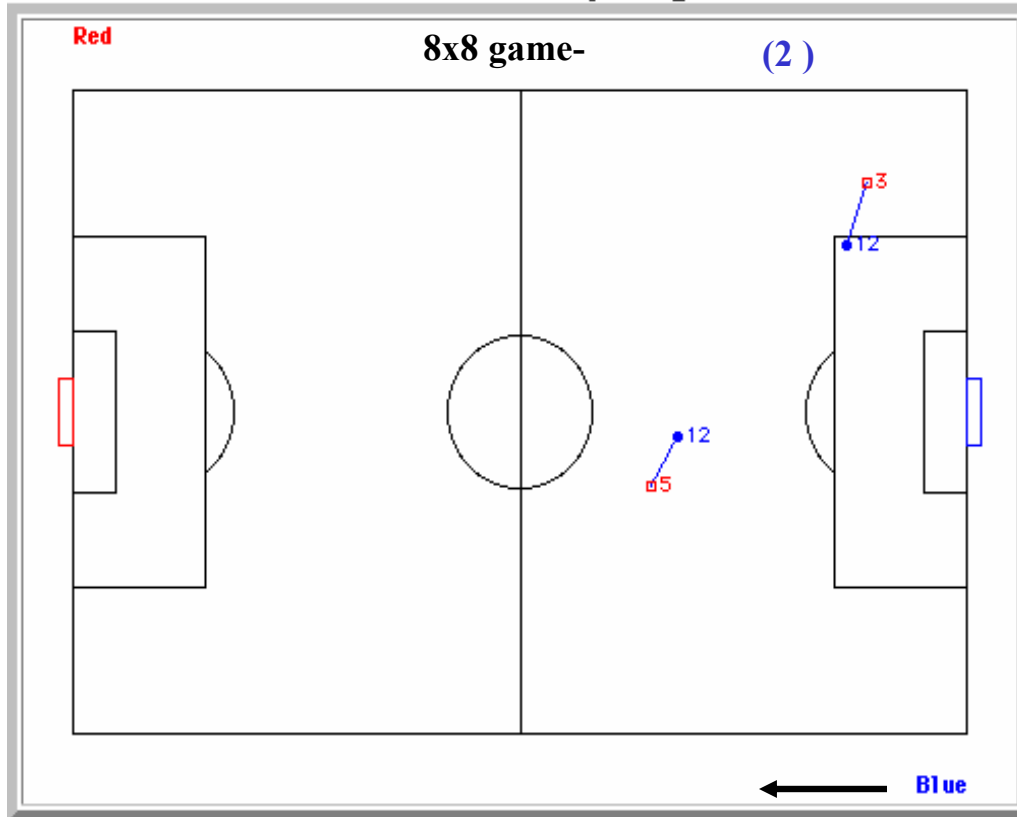
- She had almost 4 times more passes in the small game
- She scored 2 goals and 3 shots on the small game
- She Intercepted more than 3 times the ball from the opponent
- Her completion rate was down ( most of her lost passes were in the attacking 1/2
- She had 2 times more completed passes in the small game ( 10 Vs 5 passes)



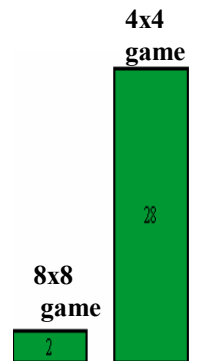
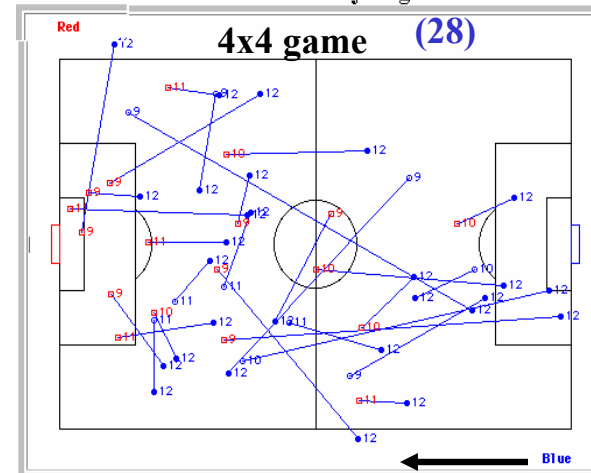
# Page- Player Performance-Total Passes

## Blue Team - No "12"

Total Passes by Page

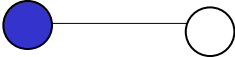


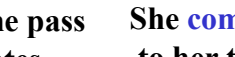
Total Passes by Page

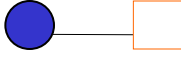


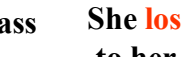
Total Passes Comparison

**Legend:**

- 

She **initiated** the pass to her teammates
- 

She **completed** the pass to her teammates
- 

She **initiated** the pass to her teammates
- 

She **lost** the pass to her opponent



## Page- Player Performance-Total Passes Blue Team - No "12"

### Head-to-Head Comparison

Game	GO	IG	SH	IS	CP	LP	TP	CR	IP	CK
4 v 4	2	0	5	0	10	18	28	36%	29	0
8 v 8	0	0	0	0	0	2	2	0%	2	0

GO: Goals (Number of goals during game)

IG: Impact Goals (Number of passes resulting in a goal)

SH: Shots on Goal (Number of shots on goal)

IS: Impact Shots (Number of passes resulting in a shot on goal)

CP: Completed Passes (Number of passes completed to team-mates)

LP: Lost Passes (Number a passes lost to opponent)

TP: Total Passes (Completed and lossed passes during game)

CR: Completion Ratio (Percent of total passes that were completed)

IP: Intercepted Passes (Number of passes that were intercepted from the opponents)

CK: Corner Kicks (Number of corner kicks)

TI: Time (Total number of minutes played in the game)

### Observations & Analysis

#### 8x8 game

- She was assigned to play as a defender
- She had 2 total passes and she lost both of them to the opponent
- Her completion rate =0%
- She intercepted 2 passes

#### 4x4 game

- No positions were assigned. (She moved on her own all over the field)
- She played mostly at mid-field/ fwd (according to the data shown in the small field.
- She scored 2 goals and took 5 shots on goal
- She had 28 total passes
- She completed 10 passes with a completion rate of 36%
- She intercepted 29 passes.
- Most of her passes were forward direction.

### Comparison of Page's Performance

#### (8x8 Vs 4x4 game)

- She had almost 14 times more passes in the small game
- She scored 2 goals and 5 shots in the small game and none in the large game
- She Intercepted almost 15 times the ball from the opponent in the small game
- Her completion rate was 36% in the small game and 0 in the large game
- Most of her passes were in the attacking 1/2
- She went from no completed passes in the large game to 10 completed passes in the small game (from 0 to 10 passes)